

Overhead Line Construction Competences – enforcing suppliers compliance

National Electrification Programme Team
July 2015

December 2007 – high profile overruns at Rugby, Shields Jnc & Liverpool Street

Network Rail chiefs condemned by MPs
Daily Telegraph

Record fine for Network Rail after 'letting passengers down' in New Year's travel chaos
Daily Mail



LIVE BBC NEWS CHANNEL

Last Updated: Tuesday, 8 January 2008, 22:05 GMT

E-mail this to a friend Printable version

New Year rail delays 'a fiasco'

Rail delays which disrupted thousands of journeys at the New Year have been criticised as a "fiasco", by MPs.

For the Tories Theresa Villiers blamed "incompetent" Network Rail managers and said ministers had not set up an effective system to penalise failures.

Engineering work at Rugby caused delays for thousands

ORR confirms £14m penalty for Network Rail

February 2008 – ORR Enforcement Notice

New NR Standard for OLE Construction Competences (OLEC)

Written by cross-industry group made up of experts from:

- Network Rail
- Contractors
- Training Organisations
- Facilitated by Railway Industry Association

Issue 1 of NR-L2-CTM-028 Competence and Training in OLE Construction Engineering issued March 2009

Issue 2 of NR-L2-CTM028 issued June 2010

Mandatory Compliance since 1 July 2010


Ref:	NR-L2-CTM028
Issue:	1
Date:	7 March 2009
Compliance date:	01 July 2010

Level 2

Competence and Training in OLE Construction Engineering

Endorsement and Authorisation


Endorsed by:


.....
R Stainton, Head of Electrical Power Engineering

Authorised by:



.....
M Ruddy, Head of Competence & Training

Accepted for issue by:


.....
M McManus, National Standards Manager

This document is the property of Network Rail. It shall not be reproduced in whole or part nor disclosed to a third party without the written permission of Network Rail.
© Copyright 2009 Network Rail.

Uncontrolled copy once printed from its electronic source.
Published and issued by Network Rail, Kings Place, 90 York Way, London, N1 9AG



Who is covered by OLEC competences?

All staff that work on a Network Rail OLE construction site or anyone who may affect the integrity of the OLE system during OLE construction, renewal, enhancement or modification works.

For example, any unplanned / unrelated activity that has the potential to interfere with the OLE construction works will fall into this category.

Including anything that gets near or causes distraction to:-

- OLE construction plant
- OLE infrastructure
- Persons undertaking the 'on site' OLE construction activities or others who may be exposed to or import site risks

This standard covers all OLE equipment types and systems.



The competences

OLEC 1: Access OLE Construction Sites

OLEC 2: Undertake Basic OLE Construction Activities under Direction

OLEC 3: Construct, Renew, Enhance and Modify OLE in accordance with Design Drawings and Specifications

OLEC 4: Control and Supervise OLE Construction, Renewal, Enhancement and Modification Activities in line with Specifications

OLEC 5: Confirm the OLE is Safe for Operational Purposes between Construction Activities



Although a mandated standard....

In 2012, there were....

No approved training courses

No consistency in recording competences

No central database of OLEC competences

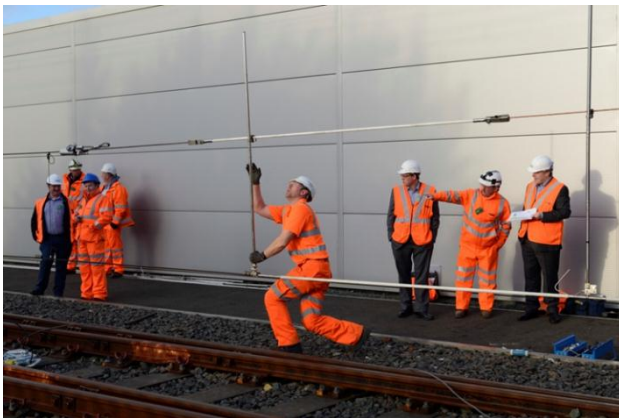
No clarity on the assessment of OLEC staff

No national audit of compliance



Steps taken....

- ❑ OLEC 1-3 Training Material issued March 2013
- ❑ OLEC conference held with suppliers April 2013
- ❑ OLEC competence audits commenced Sept 2013
- ❑ OLEC Learning Event held October 2013
- ❑ OLEC competences built in Sentinel June 2014
- ❑ OLEC Trainers conference December 2014
- ❑ OLEC into Sentinel briefing to suppliers July 2014
- ❑ Review of CTM 028 carried out July – Dec 2014



Reason for issue

The volume of Overhead Line construction works in CP5 & 6 poses an increased risk to operational and personal safety. It is important that we increase build quality and productivity rates. To mitigate this risk, overhead line construction competencies will now be **enforced** through the Sentinel Scheme.

This specification sets out the **minimum** requirements for the **assessment** of personnel who undertake OLE construction, renewals, enhancement or modification project activities on Network Rail managed infrastructure.

It defines the processes to be implemented and managed via the Sentinel Scheme (for OLEC competencies 1 to 3 only) and the standards that are to be achieved to confirm that personnel undertaking these activities are **competent** to perform their tasks.

The Letter of Instruction applies to all persons (except NR Delivery unit OLE maintenance staff who should comply with NR/L2/CTM/014) who may affect the integrity of any type of OLE system during OLE construction, renewal, enhancement or modification works on Network Rail managed infrastructure.

Published and issued by Network Rail, 2nd Floor, One Eversholt Street, London, NW1 2DN.

Letter of Instruction: NR/BS/LI/347

Issue date: 16th January 2015
Compliance date: 1st May 2015
Expiry date: On further issue or total withdrawal of the standard
Contact details: Daniela de Sá, Discipline Manager, Daniela.DeS@networkrail.co.uk, Waterloo General Offices, SE1 8SW
Rail electrification Development Group Email: Redg@networkrail.co.uk

Standard affected: NR/L2/CTM/028 (Issue 2), Competence and Training in OLE Construction Engineering

1 Reason for issue
The volume of Overhead Line construction works in CP5 poses an increased risk to operational and personal safety. To mitigate this risk, overhead line construction competencies will now be mandated through the Sentinel Scheme. This Letter of Instruction details the changes required in NR/L2/CTM/028 Issue 2 to manage OLE competencies OLEC 1 to OLEC 3 into the scheme. A further review of OLEC 4 and OLEC 5 competencies will be carried out prior to updating these competencies into Sentinel. The opportunity has also been taken to revise the requirements for OLEC 1 competency which has on occasion led to confusion with site teams.

2 Scope
This Letter of Instruction applies to all persons (except NR Delivery unit OLE maintenance staff who should comply with NR/L2/CTM/014) who may affect the integrity of any type of OLE system during OLE construction, renewal, enhancement or modification works on Network Rail managed infrastructure.

3 Changes

Clause/sub clause	Change
Reference Documentation	Add: <ul style="list-style-type: none">• NR/L2/OHS/050 Sentinel Scheme Rules• NR/L2/CTM/014 Competence & Training in Overhead Line Engineering• NR/BS/LI/326• Sentinel Scheme Rules (via Raisentinel.co.uk)• Rail Training Accreditation Scheme Rules (via Raisentinel.co.uk)
1 Purpose	Now reads: This specification sets out the minimum requirements for the assessment of personnel who undertake OLE construction, renewals, enhancement or modification project activities on Network Rail managed infrastructure. It defines the processes to be implemented and managed via the Sentinel Scheme (for OLEC competencies 1 to 3 only) and the standards that are to be achieved to confirm that personnel undertaking these activities are competent to perform their tasks.

Network Rail Letter of Instruction template December 2010



Key items of clarification included.....

OLE Construction Site

Any site on Network Rail managed infrastructure where construction, renewal, enhancements or modifications to the OLE system are taking place. This may be a specific section of a larger construction site.



OLEC 1 Access OLE Construction Sites

This module is aimed at training persons:

- whose work involves accessing an OLE construction site whilst supporting OLE activities (**e.g. machine & crane controllers and others**)
- having to accompany others without OLEC certification who are visiting site (not undertaking work) and are at risk from OLE construction or may import additional risk to OLE construction.

The aim of the module is to provide people with a basic knowledge of the OLE system, its components and the working methods associated with construction, renewal, enhancement or modification of OLE assets.

Why Sentinel?

Sentinel will provide the passport for working on and around our infrastructure safely.

Provides assurance that competencies are current and valid for the tasks being undertaken

Network Rail actively supports the inclusion of OLEC in Sentinel.

Sentinel: The Aims

Safer - “no-one undertakes an activity unless they have been trained and assessed as competent”

Smarter – using the latest ‘smart’ technology to deliver and exploit information where it’s needed at all times

Simpler – one card solution, easy to verify, single source of ‘truth’



Sentinel Scheme Rules

From time to time there may be important news or letters of instruction for the Sentinel Scheme. We will try to publish as we receive them.

February 2015

This is an important message for any staff who work on OLE construction sites on Network Rail Infrastructure, including OLE constructors, machine operators and machine controller.

The volume of Overhead Line construction in CP5 poses and increased risk to operational and personal safety. It has been decided therefore to incorporate Overhead Line construction engineering competencies detailed in NR/L2/CTM028 into the Sentinel Scheme.

To provide a simple, single point of entry for all supply chain skills through Sentinel.



Electricity at Work Regulations 1989

Regulation 16 states:

*No person shall be engaged in any work activity where technical knowledge or experience is necessary to prevent **danger** or, where appropriate, **injury**, unless he possesses such knowledge or experience, or is under such degree of supervision as may be appropriate having regard to the nature of the work.*



Always be sure the required plans and permits are in place, before you start a job or go on or near the line.



To verify that:

- ❑ All staff who work on your worksites are aware of the requirements of NR-L2-CTM-028
- ❑ All staff are trained and assessed to the required level of the standard and satisfy the requirements of NR/L2/INI/02009
- ❑ Sponsors have provided the competence records of all their practitioners to be uploaded onto Sentinel and will assure that competencies are current and valid for the tasks being undertaken
- ❑ Without a valid Sentinel competence, staff may not be permitted to work on a NR OLE construction site after **01 August 2015**

For further information, please email redg@networkrail.co.uk

QUESTION	ANSWER
<p>Is OLEC 1 required for a visual inspection such as Height & Stagger survey in an OLE Construction site?</p>	<p><i>Yes, working on a site (which potentially imports risks or exposes personnel includes taking photographs, surveying, taking notes etc) all require OLEC 1.</i></p>
<p>I am working installing foundations and other general groundworks; do I need OLEC 1?</p>	<p><i>Yes as you will be exposed to construction site risks and may import additional risks</i></p>
<p>If scrap rail is planned to be removed from site by a RRV in a non-OLE construction site under the wires (e.g. plain line renewals), is OLEC1 required?</p>	<p><i>No, that is not an OLE construction site, normal Track Safety and protection procedures will be required for this work</i></p>
<p>What if I am a Project manager visiting the site, do I need OLEC 1?</p>	<p><i>No, so long as you are accompanied by a person with the correct competency.</i></p>

For further information, please email redg@networkrail.co.uk

Closing Slide